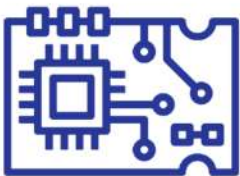
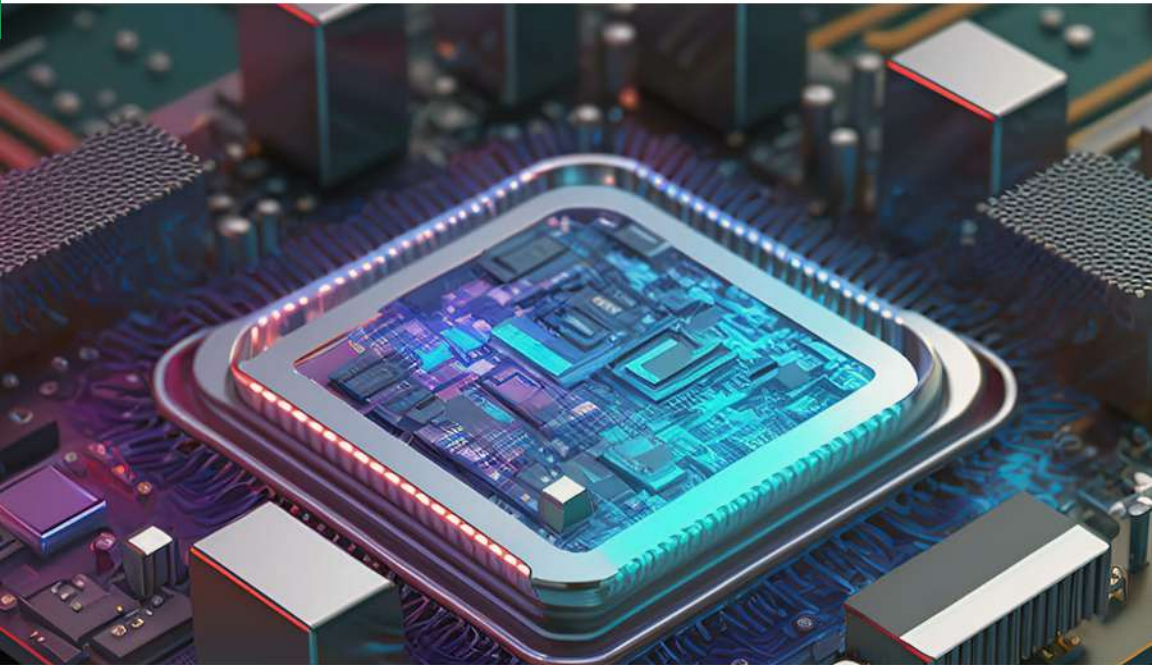


*Great Technical Prowess.
Great Humane Qualities.
No Hubris™*



**Embedded Software
& Linux Systems**



Embedded Software Eco-System

Operating Systems Competence	RTLinux, FreeRTOS, Baremetal, Yocto based Linux.
Processors Platforms Competence	ARM7/8/9 architecture with the ARM Cortex processor series Cortex-A/M/R.
Microcontrollers/ Microprocessors Platforms	Renesas, STM, Artery and open hardware such as Beaglebone, RaspberryPI.
IDE Competence	STM32 Cube, Keil, e2Studio, Visual Studio, Visual Studio Code and Eclipse.
Peripheral Interfaces	Ethernet, USB 3.0, SPI, SPIM, I2C, CAN, I2S, CAN FD, Zigbee, BLE, MATLAB, DMA and LIN.
Programming Languages	Embedded C, C++, C# and Python.
Connectivity	Linux host connectivity and Windows host connectivity.



Embedded Software Services

Ability to understand business requirements and translate them into High-Level Design(HLD) and Low-Level Design(LLD) artifacts for developers.

Board support Package:

Board Bring Up with Boot loader, OS and File system.

Embedded Application Development:

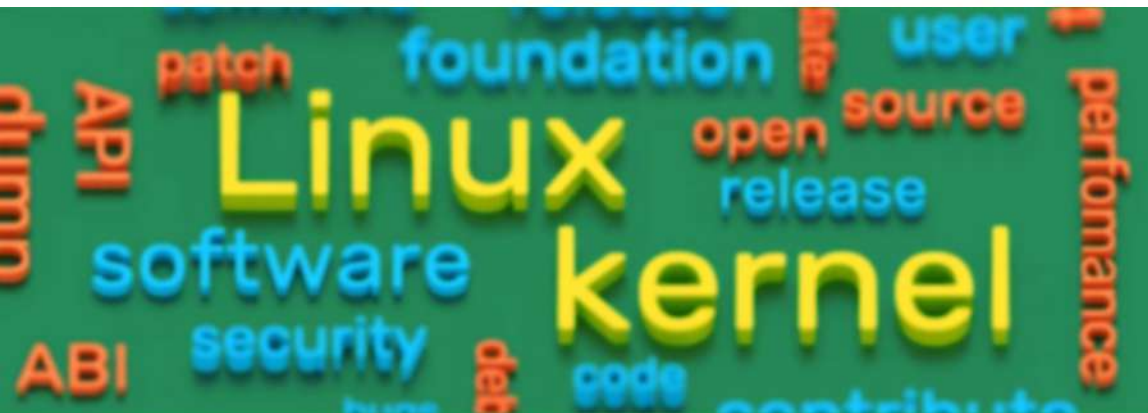
Firmware Development.
Device Driver Development.
Application Development.

Porting:

Migration of software to new platforms or architectures, such as adapting applications for Yocto-based Linux or Cortex processors.
Ensuring compatibility and optimizing performance for the target environment.
Utilizing tools like QEMU and cross-compilers for efficient porting.

Testing and Validation:

Unit Testing, Blackbox Testing, System Testing and Design Verification Testing.



Linux Systems

Silarra Technologies involves the development, testing and maintenance of software applications/drivers/modules that run on Linux- based systems of all flavors like Ubuntu, Red Hat, CentOS etc.

- Developing device drivers for peripherals and kernel modules for Linux systems.
- Implementing custom real-time application programs using Linux-based real-time kernels and libraries.

Developing and integrating software components into larger Linux-based systems.

- Developing custom Linux distributions tailored to specific hardware platforms or application requirements.

Contact Us:

Headquarters

#478, S.S. Arcade, 1st Floor, Phase-2,
Ideal Homes , Rajarajeshwari Nagar,
Bengaluru, Karnataka-560098
India

 www.silarra.com

 business@silarra.com

 +91 96634 12518

 www.linkedin.com/company/silarra